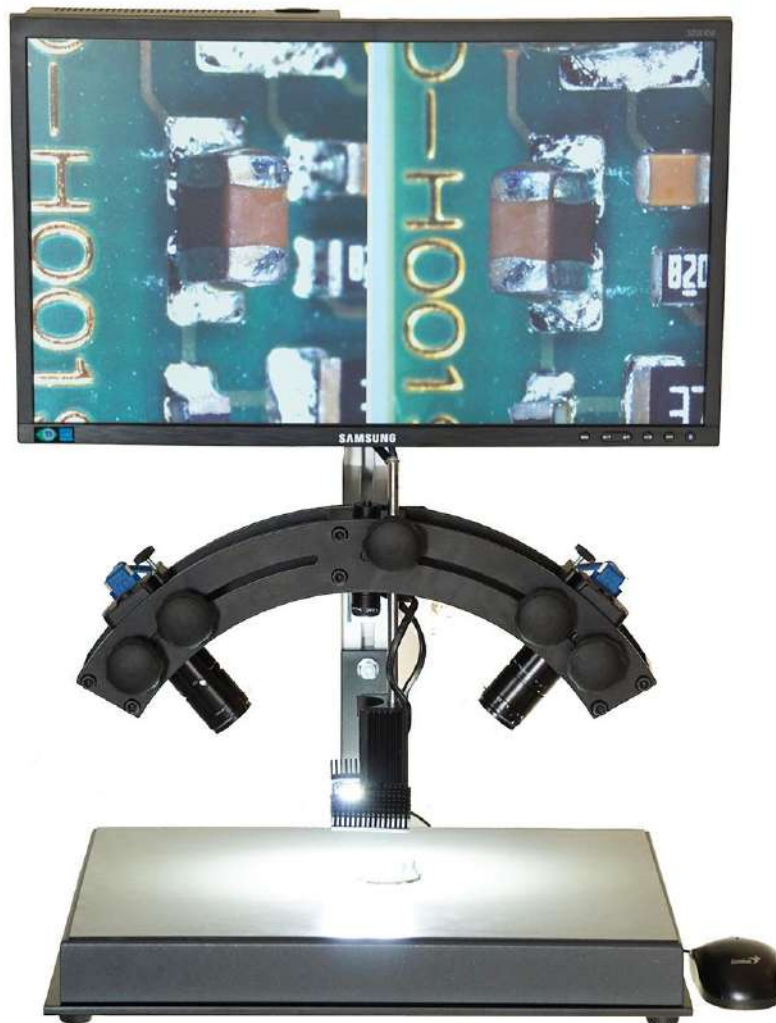


SANXO – Scope DUAL5: dual view microscope

The SANXO-Scope DUAL5 is ideal for PCB inspection. The ANGLE of VIEW of both cameras are adjustable. Using smooth moving linear bearing XY-table the user can go through the whole PCB very quickly especially focusing on the soldering joints. The quality inspection process can be shortened with the use of the dual microscope. The two different views of the same component on PCB ensures the high-quality inspection for the SANXO-Scope DUAL5 users.



SANXO – Scope DUAL5: dual view microscope - Basic Features

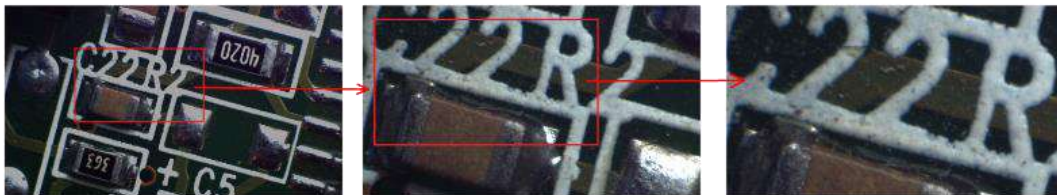
- Sharp live image, high resolution
- Easy to use with a single mouse
- One click documentation and DTM identification
- Image and Data saving on SSD or on network drive

SANXO – Scope DUAL5 microscope is a reflected light microscope, because it uses the reflected beam of the incident light. Ideal to inspect opaque samples, anything that is nontransparent. The SANXO digital microscope performs all the tasks of a traditional compound microscope with the benefits of digital image processing.

Zooming

The camera stand allows the user to use different working distances very easily by moving the camera closer or further. If the object distance is fixed then the user still can use the real-digital zoom by scrolling the mouse wheel. Using the digital zoom the image is equally very sharp and clear on the full HD resolution LCD thanks to the very good 5 Mpixel cameras.

Use the mouse wheel to switch between the zooming profiles. The zoomed area will always be centered to the current position of the mouse pointer. An overlay graphic on the top right corner provides information on the current size, number and location of the zoom state.



Panning

If the currently active profile only shows a section of the camera sensor's image, then the currently shown part becomes movable. Again, an overlay on the top right corner of the screen gives the user feedback on the current state of the pan.

Materials

The 6mm thick Base Plate is painted metal, the pole is standard 40x40 ITEM aluminum profile, the camera holder and the case are painted aluminum and the LCD and mini-PC holder is painted sheet metal. The base plate is covered with a 2mm ESD rubber mat. The rest of the parts of the system are EC complied standard products.

Features

The stand has adjustable holders for both camera and monitor that enable influencing imaging attributes, such as the camera distance, and operating ergonomics. The monitor can be tilted to get the best view angle for the user. Choice of lenses dictates many properties of the setup as the specifications such as focal length and aperture range ultimately define angle of view, magnification and depth of field. The application offers basic functionality such as digital zoom and pan, real-time image enhancement and image saving (local image folder/remote USB memory stick device).

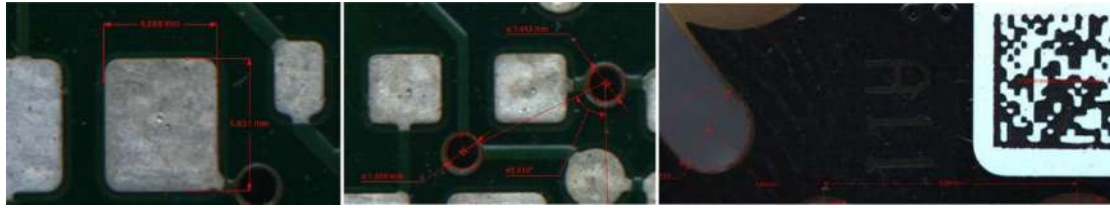
Video recording

The SANXO-Scope HD provides video recording. The resolution and the framerate can be adjusted in the settings. To start or stop the video recording, simply click the appropriate icon in the right-click menu.

HDR

The SANXO-Scope HD offers the **High Dynamic Range Imaging** function. This function highlights the details in the darker part of the image (typically if the details are in the shade) or reduces the shiny saturated bright part of the image. There are two HDR functions available. One of the functions is optimized for speed and the other is optimized for image enhancement.

Measurements



Angle

With the SANXO-Scope HD you can measure angles. The user has to mark the 3 points manually. The measurement unit is degree.

Circle

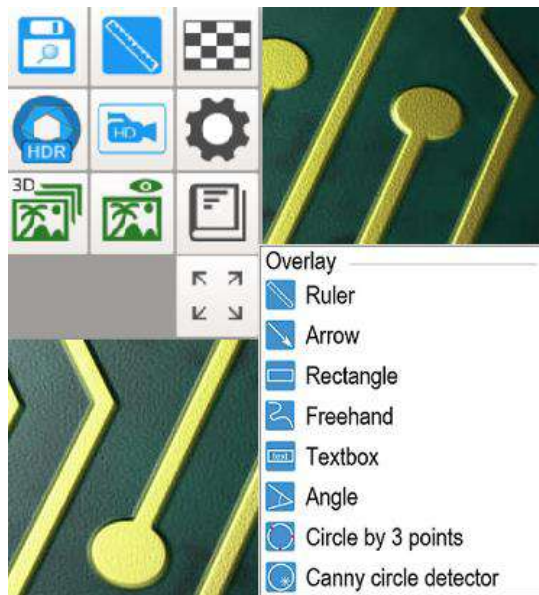
For measuring circles, the user has two options: a manual and automatic method. With the manual method (Circle by 3 points) the user marks the 3 points, which defines the circle. With the automatic method (Canny circle detector) the user marks only a rectangle area around the circle. The dimensions are in pixels or after calibration in mm units.

DTM Code reading

If the product has identification code then the user can use the DTM tool to read it and save the image with a name that includes time stamp and identification code.

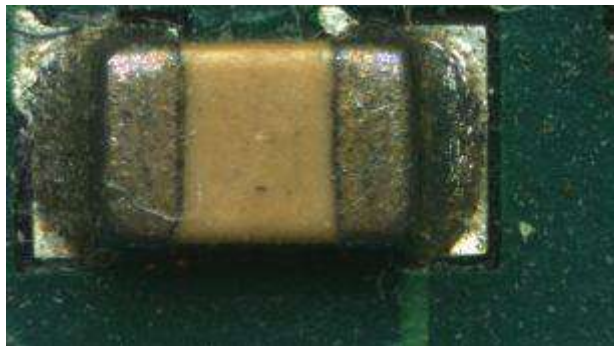
Overlay Graphics

The SANXO-Scope HD provides overlay graphics that can highlight and/or measure certain features for documentation. For highlighting the user can use an Arrow, Rectangle, Freehand and Text box. The user can measure circles, distances and angles. The positions of the overlay graphics will not change if the user zooms in or zooms out.



HDR

With the SANXO-Scope HD, applying **HDR (High Dynamic Range) techniques**, high dynamic range light conditions that are problematic even for the human eye, can be easily managed. During the process an image sequence is captured, applying varying exposure times. Based on the sequence the camera response can be estimated, and a pixelwise floating point representation can be created.



Setups and SANXO – Scope DUAL5: dual view microscope Prices

All setups come with a heavy-duty platform and an adjustable stand, a Full HD resolution monitor, a mini-PC with mouse, Megapixel TAMRON lenses and the SAN40W illumination. The Standard Setup which supports most of the desired use has a 50mm megapixel fixed focal length TAMRON lens and a LED illumination. Additional accessories such as tilting table, XY table or extra lightning stands can also be configured into the package. A standard SANXO-Scope HD setup consists of the following products:

Models	SANXO-Scope DUAL 5
Item no:	SC-07-02-50
Camera	2 pcs IDS Imaging 5 MPixel USB3 color camera
Lens	Megapixel TAMRON 50 mm
Monitor	Full HD resolution 22"
Camera stand	Adjustable and robust camera stand
PC	INTEL NUC i5® 8GB RAM, 120GB SSD
Autofocus	Not available
3D imaging	Not available
Light source	SAN-40W white Dimmable LED Light source
Frame rate	30-60 FPS
Packaging dimensions	610x440x340mm
Weight	20kg

Distributor in Greece:



T. 210 72.43.529 - 6979 64.23.95
email: info@apples.com.gr
site: www.apples.com.gr