



CUT-OFF MACHINE
QCUT 400 A



ELECTRONIC CONTROL

With the electronic control, all cutting parameters can be saved and loaded again. Maintenance tasks can also be stored in a customer-specific manner. During the automatic cutting process, all parameters such as feed speed, cutting force etc. can be modified.

PROGRAM CYCLE

By pressing the start button, the main motor and the feed are activated. The integrated cut detection ensures a constant cutting behavior, even when the cutting disk wears during sectioning. The feed speed is automatically decreased when an overload occurs during the cutting process.

The universal wet-abrasive cut-off machine Qcut 400 A with automatic travel and cut-off allows precise, soft touch cutting with 2 axes in arbitrary directions (Y/X axis) and can be equipped with an automatic or manual Z-axis for parallel serial-cuts (option).

The newly developed intuitive user software with graphical LCD interface makes the automatic process sequence easy and clear.

The large cutting chamber of solid, powder coated aluminum construction is easily accessible through sliding door and side doors. Complex geometric shaped samples can be fixed securely on the T-slot table using our reliable clamping systems. The innovative Quick-Change system facilitates maintenance and replacement of the cutting disc. Our approved LED illumination of the cutting chamber is energy saving, damage resistant and guarantees optimum illumination of the cutting chamber.

PULSED CUTTING

Especially when the material is thick and difficult to cut, the adjustable automatic pulsed-cut offers advantages such as gentle cutting and optimal cooling of the intersection area.

CUTTING FORCE DEPENDENT FEED CONTROL

The feed speed automatically decreases when the cutting force reaches a pre-defined limit. This protects the machine, sample and clamping tools from overloading.



PRECISION CROSS FEED

The Z-axis is integrated in the table. This allows keeping the cutting height at the same level. The automatic cross feed with serial cutting function produces precise parallel cuts.

JOYSTICK CONTROL

To reduce times for setting up, all axes can be controlled with a joystick.



SAFETY

Integrated safety protection only allows the automatic doors to be opened when the cutting wheel has stopped rotating.



LASER ALIGNMENT

With the optional line laser the cutting line can be projected on the sample. This helps to define the exact cutting position.



BASIC MODULE

Qcut 400 A

- | automatic horizontal and vertical movement (X- and Y-axis)
- | variable speed
- | 10.1" Touch-Screen user interface with intuitive QATM user software
- | superior LED illumination of cutting chamber
- | parallel setting of wheel guard during cutting sequences increases cutting capacity
- | opening on the right for long parts
- | automatic touch detection
- | cutting-force dependent feed control (X- and Y-axis)
- | 200 customized programs storable
- | solid aluminum design



Order No.: M1842000

EQUIPMENT

POWER SUPPLY

Equipment 1

Variable speed

400 V/50 Hz (3Ph/N/PE)

Order No.: A1842000

Equipment 2

Variable speed

480 V/60 Hz (3Ph/PE)

Order No.: A1842001

Equipment 3

Variable speed

220 V/60 Hz (3Ph/PE)

Order No.: A1842002

Table drive

Equipment 1

X-axis automatic
(without Z-axis)

| included in basic unit

Equipment 2

X-axis automatic
Z-axis (cross feed)
manual (hand wheel)

| made of stainless steel

Travel Z-axis 150 mm

Precision 0.1 mm

Order No.: A1842004

Equipment 3

X-axis automatic
Z-axis (cross feed)
automatic

| made of stainless steel

Travel Z-axis 150 mm

Precision 0.1 mm

Order No.: A1842005

Order No.: A1842003

EQUIPMENT

COOLING AND FILTER SYSTEMS

Equipment 1

Recirculation cooling unit



- | integrated, mobile
- | multi-chamber filtration
- | inlet sieve with filter bag (see consumables)

Tank ~ 130 ltr.

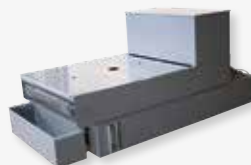
Pump ~ 100 ltr./min

WxHxD 625 x 608 x 810 mm

Order No.: A1842008

Equipment 2

Belt filter system 285



- | incl. filter roll

Tank 285 ltr.

Filtering capacity 100 ltr./min (referring emulsion)

Pump 100 ltr./min

Filter area 0.85 m²

Filter fleece width 710 mm

WxHxD 929 x 790 x 1745 mm

Weight ~ 120 kg

Order No.: A1842011

Connection set 285

- | for belt filter system please order connection set

Order No.: Z6501003

OPTION

CENTRIFUGAL SEPARATOR



- | removes coolant mist
- | purifies the air and increases visibility
- | exhaust power 425 m³/h

Order No.: A1842010

LASER ALIGNMENT AID



- | laser line to visualize the cutting line
- | laser class 1

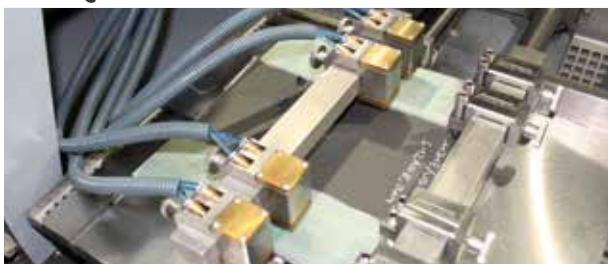
Order No.: A1842009

ROTATION TOOL

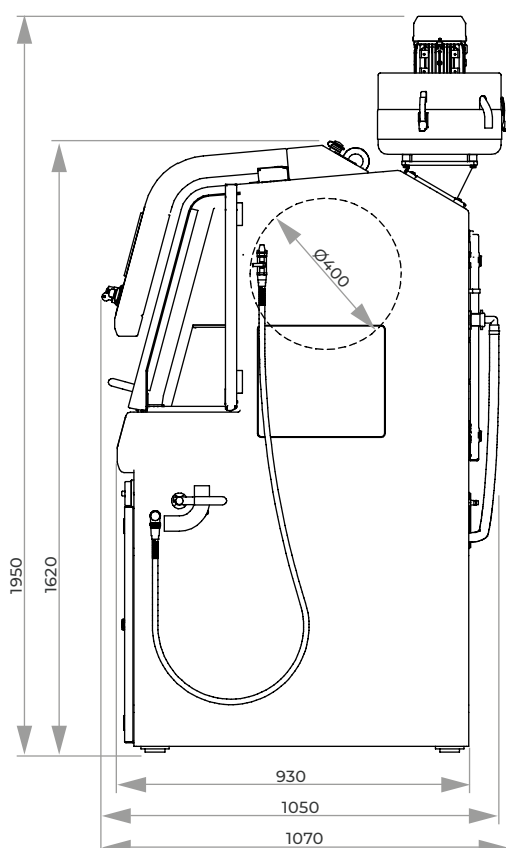
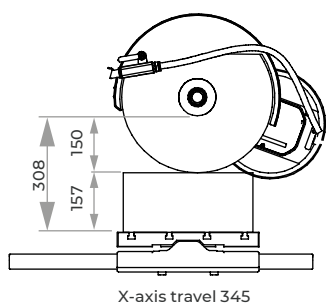


- | tool with vertical rotary feed, parallel to wheel
- | angle input via software control

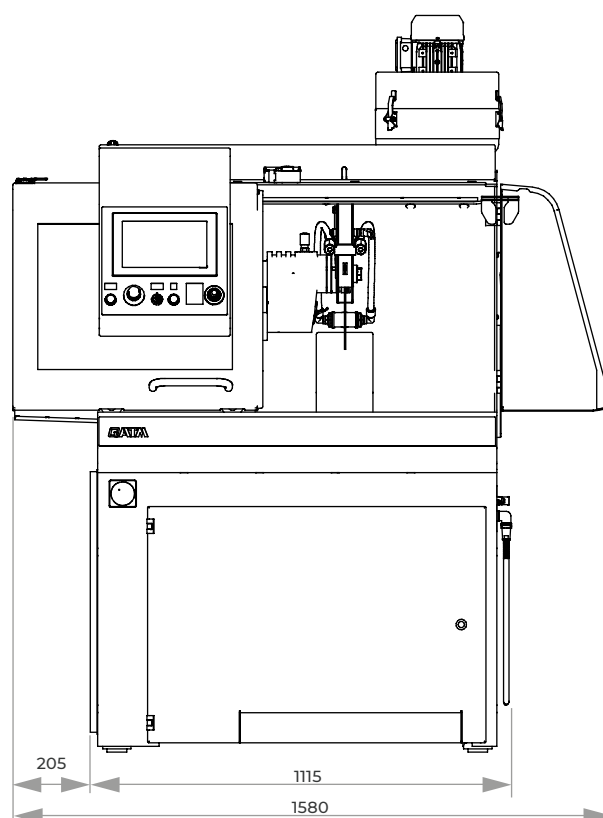
on request

OPTION
**AUTOMATIC PULSED CLAMPING SYSTEM
FOR Qcut 400 A**


- | For automatic Z-Axis
- | For parallel cuts of variable thickness of 5–130 mm
- | Max. cutting length: 285 mm (for sample of 20 mm thickness)
- | Max. cross feed 150 mm (for one clamping)
- | Cross feed realized by automatic standard Z-axis of Qcut 400 A
- | Assembled on automatic standard Z-axis of Qcut 400 A (detachable)
- | Fixation and cross feed realized by 4 adjustable manual clamps with pressure screws
- | Additional. fixation by 4 adjustable, pneumatic clamps each with 100 N clamping force

Order No.: A1842013

ACCESSORIES
BASIC SET QCUT 400 A
Order No.: Z1842002
SPECIFICATIONS

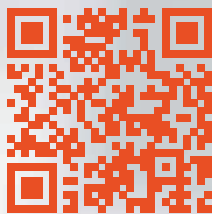
Max. theoretical cutting capacity	Ø 150 mm
Cut-off wheel	Ø 406/16" mm
Arbour size	Ø 32 mm
Horizontal movement	345 mm
Vertical movement	200 mm
Cross feed	150 mm
Feed rate	0.001-40.0 mm/sec
Table WxD	1 550 x 375 mm (without Z-axis) 2 420 x 375 mm (with Z-axis)
T-slot	12 mm
Motor cut-off wheel	7 kW, S1-mode
Connected load	17 kVA
Variable speed	1000-2900 rpm
Power supply	1 400 V/50 Hz (3Ph/N/PE) 2 480 V/60 Hz (3Ph/PE) 3 220 V/60 Hz (3Ph/PE)
WxHxD	~ 1,115 x 1,620 x 1,050 mm
Weight	~ 480 kg (depends on equipment)



Sign up for our newsletter!

You will occasionally receive exclusive information on seminars/webinars, applications and product news.

Subscribe now:



www.qatm.com/newsletter
(You may unsubscribe any time)

